

EDGE INTERACTIVE  
WHITE PAPER

March 2006

# Integrating ezRecruit™ with your Student Information System (SIS)

Architecture Options (a Working Paper)

# Table of Contents

1	Introduction.....	3
2	Student record integration - Option 1.....	4
3	Student record integration - Option 2.....	5
4	Institution record integration – Option 1 .....	6
5	Institution record integration – Option 2 .....	7

# 1 Introduction

This document outlines the architecture options available when integrating ezRecruit™ with an SIS. It considers two data elements – student record and school record information.

The following four options are outlined:

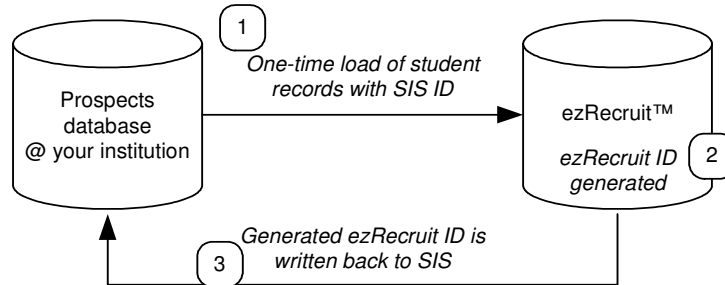
- Student record integration – Option 1  
where ezRecruit™ is the master or controlling database
- Student record integration – Option 2  
where the SIS is the master or controlling database
- School record integration – Option 1  
where ezRecruit™ is the master or controlling database
- School record integration – Option 2  
where the SIS is the master or controlling database

These options are the most commonly encountered options when integrating ezRecruit™ with an SIS. However, it is by no means an exhaustive list, and EDge is open to exploring other integration options.

## 2 Student record integration - Option 1

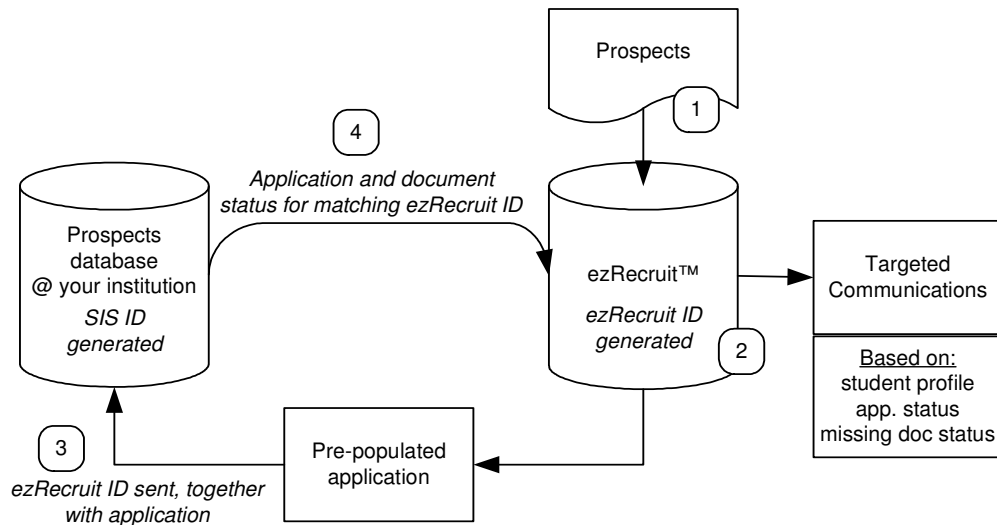
### STEP 1: PRE-LAUNCH

Prior to the launch of your ezRecruit™ system, your ezRecruit™ database is populated with the prospects from your SIS database. This one-time data load includes porting over the unique SIS ID of each prospect. Once the prospects are loaded into the ezRecruit™ database they are assigned a unique ezRecruit ID. This data is then written back to the SIS.



### STEP 2: POST LAUNCH

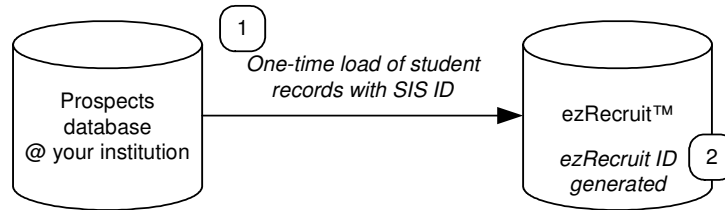
Once your ezRecruit™ system is up and running, prospects will only be entered through ezRecruit™, and not the SIS. These student records are automatically assigned a unique ezRecruit ID. When the student is ready to apply, this process is always initiated through ezRecruit™. The ezRecruit ID is sent, together with the application, to the SIS.



### 3 Student record integration - Option 2

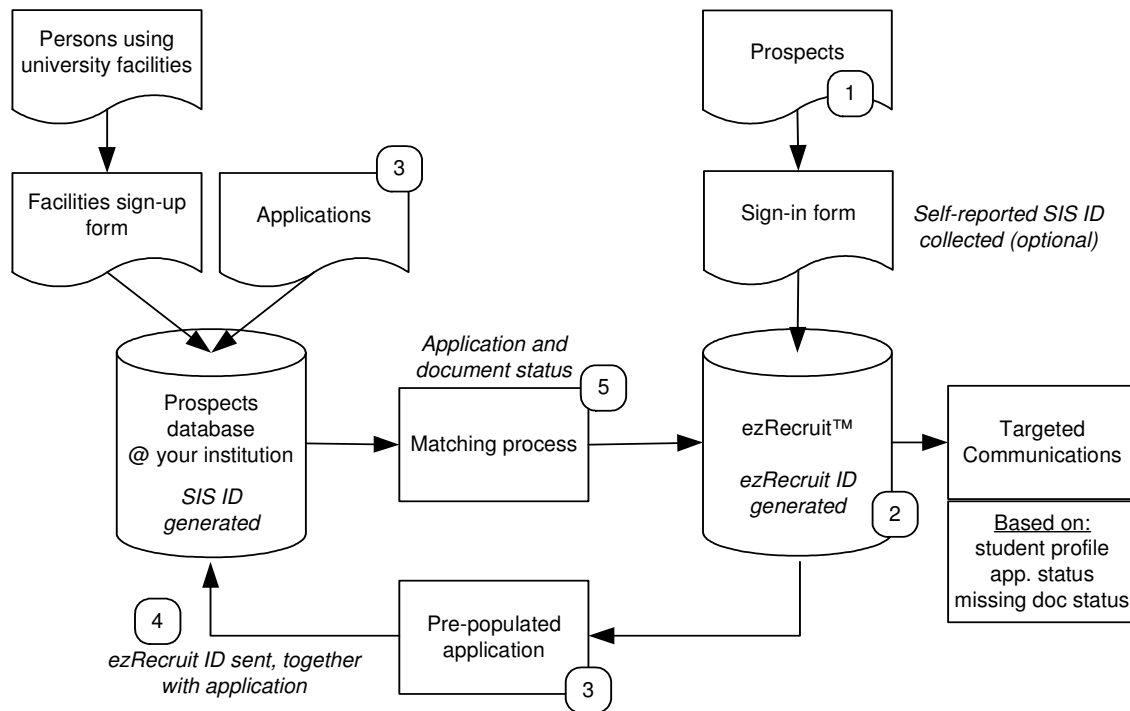
#### STEP 1: PRE-LAUNCH

Prior to the launch of your ezRecruit™ system, your ezRecruit™ database is populated with the prospects from your SIS database. This one-time data load includes porting over the unique SIS number of each prospect. However, the corresponding ezRecruit ID is not written back to the SIS.



#### STEP 2: POST LAUNCH

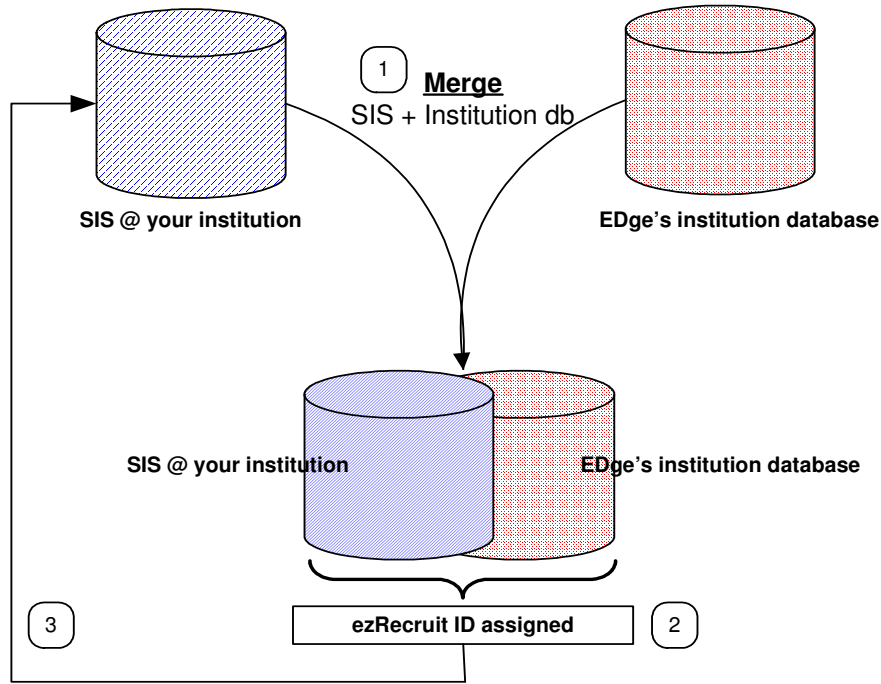
Once your ezRecruit™ system is up and running, prospects can be entered directly through ezRecruit™. Application to the school can be processed through ezRecruit™ or the SIS. When the SIS receives the application, an SIS ID is generated. When the application status is sent back to ezRecruit™, for all records with an ezRecruit ID, the application information is updated automatically. For all records without an ezRecruit ID, a matching process is done to match the corresponding student records in SIS and ezRecruit™. If there is no match, a new ezRecruit ID is generated.



## 4 Institution record integration – Option 1

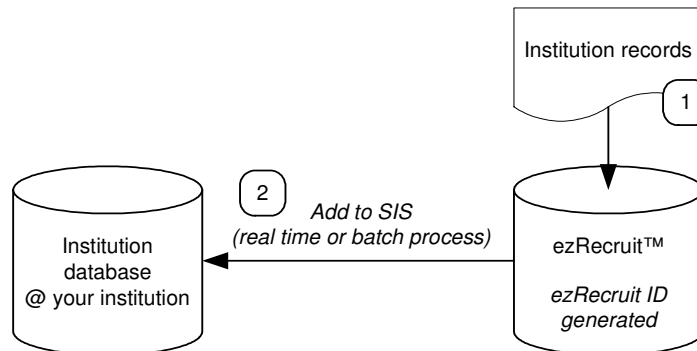
### STEP 1: PRE-LAUNCH

Both your institution database and EDge’s institution database is merged. Once the institutions are loaded into the ezRecruit™ database they are assigned a unique ezRecruit ID. This data is then written back to the SIS



### STEP 2: POST LAUNCH

Once your ezRecruit™ system is up and running, institution records can only be entered directly into ezRecruit™. Records inputted into ezRecruit™ are automatically assigned a unique ezRecruit ID. These records are then ported back into the SIS system.

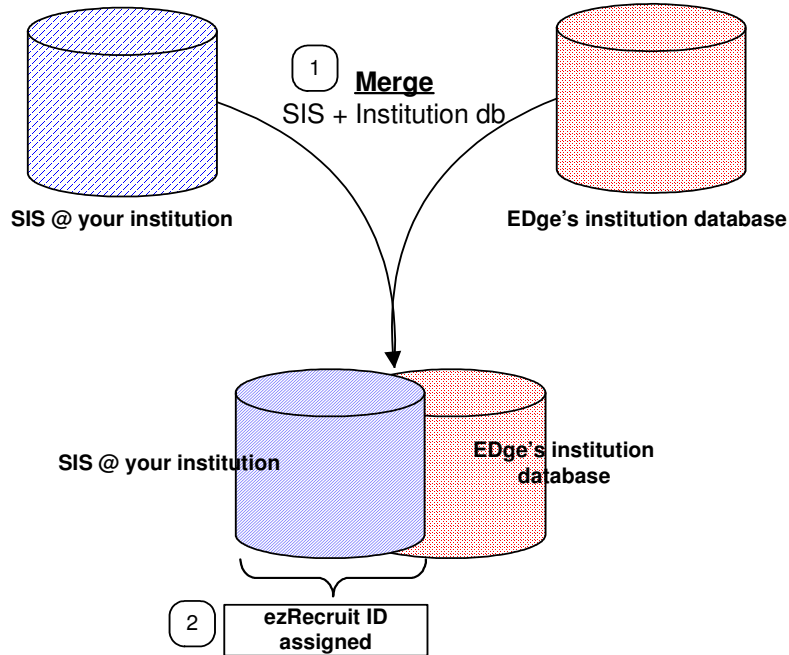


Note: You will not be able to add institution records to the SIS database.

## 5 Institution record integration – Option 2

### STEP 1: PRE-LAUNCH

Both your institution database and EDge’s institution database is merged. However, as the SIS system is the master or controlling database, only SIS institution records (with merged data) will be loaded into the ezRecruit™ database.



### STEP 2: POST LAUNCH

Once your ezRecruit™ system is up and running, new institution records should be added through the SIS system, and added to ezRecruit™ on a scheduled basis. Institution matching and merging is done using tools within the ezRecruit™ Admin Portal.

